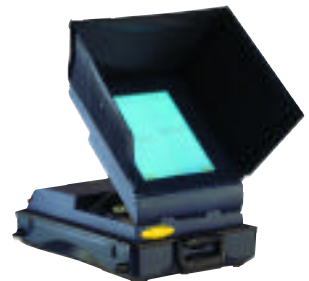




AVC Edge

EDGE FEATURES & SPECIFICATIONS • AVC EDGE FEATURES & SPECIFICATIONS





AVC Edge



Sequoia make the process of casting the ballot perfectly plain, simple, and secret."

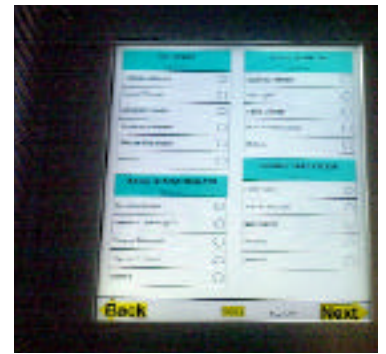
VOTER-FRIENDLY FEATURES:

The AVC Edge, is simply the most accessible voting system ever designed • Instructions and prompts guide users through all phases of operation. Navigation within the ballot is accomplished with scroll buttons, to move forward and backward, and the Contest Box, which enables voters to quickly move to any part of the ballot. • Voters can verify their selections and change their vote at any time before they cast their ballot. Votes are immediately confirmed on-screen with green check marks, a selections can be reviewed at a glance by using the Review Button. One touch of the Return Button allows voters to resume voting. • Overvoting is not a possibility on the AVC Edge, eliminating spoiled or rejected ballots. • Large typeface on the 15" LCD touch-screen makes ballots easy to read. • Wheelchairs are easily accommodated by adjusting the screen's height. No other adjustments are necessary. • The Audio Voting feature allows the AVC Edge, to serve blind voters and people who have difficulty reading. • Ballots in multiple languages* are available on the Edge. Allowing a voter to simply choose the preferred language on the first screen, the ballot is then presented in that language until the voting process is complete.

- **Unmatched Security**

The AVC Edge, provides nothing less than 100 percent accuracy, privacy and security.

- The Audit Trail provides an unalterable electronic record of all votes cast during an election. This record is redundantly stored in the AVC Edge, and on the Results Cartridge. Additionally, a chronological Event Log records the time, date, and nature of all significant system activity. Both the Audit Trail and Event Log can be printed after polls close.
- Voter privacy is ensured in two ways. Externally, built-in side panels keep selections private. Internally, vote records are electronically randomized, so votes cannot be traced to a specific voter.
- The Edge performs mandatory Pre-Election Logic and Accuracy Tests for election verification and public oversight of ballot integrity. Optional Post-Election Logic and Accuracy Tests can also be performed.
- Additionally, the Edge's Background and Power Up Diagnostics provide continuous verification of system integrity.
- High-volume Vote Simulation tests can be automatically conducted before and/or after an election.
- The AVC Edge, and its components were built for superior reliability, longevity, and security. Its design utilizes the same time-tested security features as our AVC Advantage, - the leading DRE voting machine.



AVC Edge Features

The Edge, in tandem with other Sequoia systems, automates some of the most tedious aspects of election administration, smoothly delivering your Elections Office into the 21st Century.

- WinEDS, the "Elections Database System for Windows" is Sequoia's client-server based computer network system. WinEDS is used to administer all phases of the election cycle, create electronic ballots for the AVC Edge, and tally early voting, as well as official election and absentee votes. WinEDS provides a flexible, easy to use reporting and information processing tool for the election administrator.
- Ballot set up is accomplished in-house. After election information is entered, ballots are generated by the central system automatically.
- Auto Activation eliminates the need for the poll worker to manually activate each ballot. The AVC Edge, automatically activates when a smart card is inserted by the voter, selecting the correct ballot and any other options that were incorporated into the card. After activation, the card is disabled by the AVC Edge, to stop any attempt by the voter to use it to vote twice.
- Electronic Write-Ins eliminate the problem of interpreting voter intent. Write-ins are recorded electronically and stored redundantly in the AVC Edge, and in the Results Cartridge. The write-in votes are transferred automatically, with all other votes, to the central Election Database System (WinEDS). Write-in votes for each jurisdiction can also be printed after polls close.
- Early Voting is another option provided by the AVC Edge, which can support thousands of precincts and ballot styles to accommodate jurisdiction-wide early voting on a single machine.



Quality Design

Sequoia designed the AVC Edge, for ease of use in every stage of its life, from storage and maintenance to transportation and set up.

- The Edge is easy to transport. Its self-contained case is portable for easy delivery to and from the polls. An optional storage cart further facilitates transportation and storage.
- Set up is fast and simple. Poll workers need no electronics knowledge to operate or maintain the AVC Edge,. There is no assembly or confusing wiring required at the polling site. Error messages are easy to understand for quick and simple troubleshooting.
- Economical Storage: The Edge's small, compact case can stack for storage. An external plug allows batteries to be charged without opening the case. Each unit also has an external outlet so that several machines can be plugged into one outlet during storage or service.
- Multiple Screen Types: Electronic display technology is changing at a very fast pace. A goal in our design effort was to ensure that the AVC Edge, would not require costly future upgrades to take advantage of new features and functionality.
- Memory: The AVC Edge, utilizes solid state memory for information storage and the transfer of information to and from the central set up and tabulation system. The AVC Edge, uses only high-reliability solid-state memory for ballot and vote storage. No mechanical disk drives are used because they are unreliable and prone to fail ure in conditions that voting machines must operate, like during and after temperature extremes, shock and vibration, or long storage times.
- The Edge is FEC Certified. Election officials and voters can rely on the quality and components that go into each AVC Edge,.



1



2



3



4

ADDITIONAL FEATURES :

POLL WORKER MESSAGE CENTER

A small message screen on the back of the AVC Edge, gives poll workers key information, including messages on the election state (e.g. pre-, mid-, or post-election) and the condition of the machine (e.g. in-use and error messages). It also displays the public and protective counter, that is, a count of all votes made on machine during an election as well as the total votes cast in the lifetime of the machine.

CONSOLIDATION

Machines within a precinct can be accumulated onto one cartridge and the totals for the precinct printed at the polling site. Individual machine totals can also be printed from each AVC Edge.

CURBSIDE VOTING

Accommodate curbside voting easily by transporting the self-contained AVC Edge, to the voter in their car. Under these circumstances, the AVC Edge, can operate under battery power.

OPTIONAL MACHINE LEGS

Provides the voter with proper height of the voting machine without the need for tables. Easy set up for the poll workers.

STORAGE CART

A specially designed storage/transportation card can be used for warehouse storage and transportation of the units to and from the polling place. Each cart holds up to five AVC Edge, units.

AUDIT TRAIL

Provides an unalterable, randomized electronic record of all votes cast during an election. This record, or ballot image, is redundantly stored in the AVC Edge, and the Results Cartridge. A chronological Event Log records the time, date, and nature of all significant system activity. The Audit Trail and Event Log may be printed after polls close.

LANGUAGE OPTIONS

The AVC Edge, supports multiple languages on a single ballot style. Multiple language ballots can be arranged in a number of ways on the AVC Edge, depending on the number of languages required and whether or not the additional languages use the same character set as English. A voter language selection page can be presented after the ballot is activated. After the voter chooses the preferred language, the ballot is presented in that language until the vote is cast.

ACTIVATION FEATURES :

CARD ACTIVATOR UNIT

Before a citizen can vote, the AVC Edge, requires each voter to insert a card processed by the Card Activator. After establishing the voter's identity and party affiliation (if applicable), the poll worker activates a card using this unit. The voter then takes the card and inserts it into the AVC Edge,. Once that vote is cast, the card is disabled from voting until the poll worker activates it again. AUTO ACTIVATION: This feature eliminates the need for poll worker to manually activate the ballot for the voter. The AVC Edge, automatically activates when a smart card is inserted by the voter,

selecting the correct ballot and any other options that were incorporated into the card. After activation is successful, the card is disabled by the AVC Edge, to stop any unauthorized attempt to use it again.

OPTIONAL MANUAL ACTIVATION

The AVC Edge, gives the option of manual activation, as a back-up to the auto activation system.

TECHNICAL FEATURES :

FULL SERVICE AND SUPPORT

Each Edge is backed by Sequoia's highly-trained technical support staff. We provide rapid shipment of component modules.

LONG USEFUL LIFE

Minimal service and maintenance is required.

MODULAR DESIGN

The AVC Edge, is modularly designed for easy component replacement or system upgrades.

PHYSICAL SPECIFICATIONS :

DIMENSIONS

Self-contained case is 26" x 17" x 10". Both the optional legs and the two-hour battery packs are contained within the case.

OPERATOR CONTROLS

The AVC Edge, contains manual controls for power on/off, polls open/close, ballot activate button, optional printer power, and on/off-line switches.

POWER

Operates on 110v AC as well as 13v DC. It automatically switches to DC back-up power in the event AC power is lost - without interrupting operation.

Three levels of battery back-up exist in the AVC Edge,:

- 1.The AVC Edge, has one standard internal two-hour back-up battery that is recharged when the machine is plugged into AC power.
- 2.There is an optional second two-hour back-up battery that is recharged when the AVC Edge, is plugged into AC power.
- 3.There is an optional external 16-hour battery pack.



Address
www.sequoiavote.com