



Accessible and Verifiable Voting Technology: Dexterity

The latest version of this chart appears at <http://www.verifiedvotingfoundation.org/accesscharts>

<u>Vendor</u>	<u>Model</u>	<u>Touchscreen</u>	<u>Sip/ Puff</u>	<u>Joystick</u>	<u>Foot Pedal</u>	<u>Jelly Switch</u>	<u>Additional Features</u>	<u>All Units Accessible</u>	<u>VVPR on All?</u>
AccuPoll	AVS 1000 ¹	yes ²	yes ¹	-	-	yes ³	-	yes	always
AutoMARK (ES&S)	ballot marking device ⁴	yes ⁴	yes ⁴	yes ⁵	yes ⁵	-	write-in capability ⁶ input for any stereo switch ⁷	yes	always
Avante	Vote Trakker ⁸	yes ⁹	yes ¹⁰	-	-	-	-	yes	always
Avante	Vote Trakker Full Face ¹¹	yes ¹²	yes ¹⁰	-	-	-	-	yes	always
Diebold	AccuVote TS ¹³	yes ¹³	no ⁵	no ⁵	no ⁵	no ⁵	-	no	optional
Diebold	AccuVote TSX ¹⁴	yes ¹⁴	planned ¹⁵	no ⁵	no ⁵	no ⁵	tethered telephone keypad ¹⁶	no	optional
ES&S	iVotronic ¹⁷	yes ²	no ¹⁸	-	-	-	-	no	optional
ES&S	iVotronic LS ¹⁹	yes ¹⁹	-	-	-	-	-	no	optional
Hart Intercivic	eSlate ²⁰	no ²	optional ²¹	-	-	optional ²¹	optional blink device ²²	no	optional
Populex	Digital Paper Ballot ²³	yes ²⁴	optional ²⁴	-	-	-	-	-	-
Sequoia	AVC Edge ²⁵	yes ²	no ¹⁷	-	-	-	-	no	optional

Key to Dexterity Chart:

A. "Touchscreen" refers to a computer monitor screen which allows a voter to make selections by touching the screen. Example:
<http://www.emi-marine.com/products/dps/images/touchscreen%20to%20night%20mode.jpg>



B. "Sip/Puff" refers to a straw-like accessory which enables a voter to make selections by either sucking from or blowing into the device. Example:
http://www.orin.com/access/images/sip_pufED.jpg



C. "Joystick" refers to a hand-controlled lever which enables a voter to make selections by pressing on it in different directions. Example:
<http://www.aerotech.com/products/accessories/pics/joystick.jpg>



D. "Foot Pedal" refers to device that permits a voter to make selections using his/her foot. Example:
<http://www.atpm.com/9.01/images/kinesis-foot-pedal.jpg>



E. "Jelly Switch" refers to a single input switch which has a large surface area and is very sensitive to the touch. Example:
<http://www.tecsol.com.au/images/JBx2-Holder.jpg>

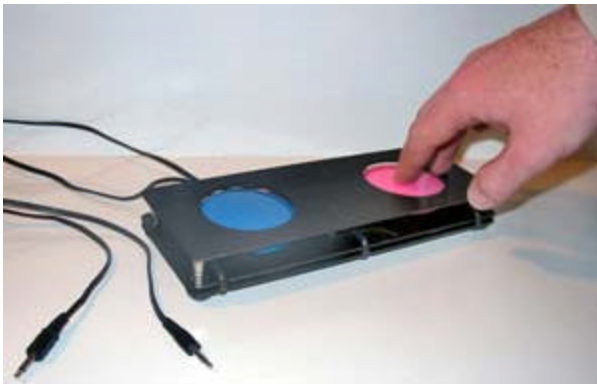


Photo credit: Disability Access Switch from Technical Solutions Australia (www.tecsol.com.au)

Footnotes for Dexterity Chart:

1. <http://www.accupoll.com/TheAccuPollAdvantage/Brochures/accessibility.pdf>
2. http://www.capc.umd.edu/rpts/md_evote_ContempVotingMach.pdf p.7
3. Confirmed by email from Frank Wiebe, AccuPoll Media Relations
4. <http://www.essvote.com/HTML/docs/AutoMark.pdf> (Note: Although some maintain that ballot-marking devices are not accessible to mobility-impaired and dexterity-impaired individuals due to the need to move the paper ballot from the device to the secure ballot box, in most areas election workers insert the ballots into the ballot box for all voters, and since it is possible to use privacy sleeves to maintain ballot secrecy for all voters, the ballot-marking devices provide as much accessibility to mobility-impaired and dexterity-impaired voters as to all other voters.)
5. http://electionarchive.net/doc_other/dopp/AdviceReDiebolds.pdf pp.8,9
6. <http://www.automarkts.com/> under tutorial under write-in screen
7. <http://www.automarkts.com/FAQ.htm> under "What options does Automark offer limited mobility users?"
8. <http://www.vote-trakker.com/White%20Papers/ACCESSIBLE%20VOTING%20with%20voter%20verifiable%20paper%20records%20in%20DRE%20Voting%20System.pdf> and http://www.vote-trakker.com/accessible_optical_voting.html
9. <http://www.afb.org/afbpres/pub.asp?DocID=aw050404&select=1#1>
10. Email letter from Rick Gleim of Avante, August 1, 2005.
11. <http://www.vote-trakker.com/White%20Papers/fullfaceballottouchscreensystem.pdf> and http://www.vote-trakker.com/accessible_optical_voting.html
12. <http://www.vote-trakker.com/evc308sprff.html>
13. http://www6.diebold.com/dieboldes/accuvote_ts.htm
14. http://www6.diebold.com/dieboldes/accuvote_tsx.htm

15. Email letter from Carrie Frank at Diebold Corporation, July 5, 2005 (attached chart).
16. Email letter from Buck Jones at Diebold Corporation, July 3, 2005.
17. <http://www.essvote.com/HTML/docs/iVotronic.pdf>
18. <http://www.sdsos.gov/3-20-03min.htm>
19. http://www.essvote.com/HTML/docs/ESS_iVotronic_LS.pdf
20. http://www.hartintercivic.com/files/accessible_DLA_12_rev.pdf
21. <http://www.hartintercivic.com/innerpage.php?pageid=26> DAU section
22. <http://www.cvfieldsmbp.org/Voting%20Technology%20for%20People%20With%20Disabilities.pdf> p.38
23. <http://www.populex.com/dfb.htm>
24. <http://www.advocacyla.org/whatsnew.html>
25. <http://www.sequoiavote.com/docs/AVCEdge.pdf>

Acknowledgements: Thanks to Verified Voting Foundation interns Jason Kim and Sarah Glaubman for the research required to prepare these charts.

© Copyright 2005, Verified Voting Foundation, Inc. All rights reserved, although reprint permission granted for nonprofit purposes with attribution to Verified Voting Foundation, Inc., a 501(c)(3) nonprofit corporation.