



# Accessible and Verifiable Voting Technology: All Categories

The latest version of this chart appears at <http://www.verifiedvotingfoundation.org/accesscharts>

Some are concerned that requirements for voter-verified paper records may delay implementation of the Help America Vote Act's (HAVA) provisions for accessible voting systems. Nothing could be farther from the truth. Equipment exists today offering both accessible and auditable voting for all voters; it is not necessary to choose between the two.

Not all accessible equipment is created equal, however. Some systems offer a wider range of options. Some offer accessible features on all units, while others provide those features only when required. Demonstrations of auditable and accessible voting equipment have taken place from New Jersey to Oregon in recent months. Some vendors have worked with accessibility advocates to develop cross-disability access and broaden the range of available features and options.

The first chart below summarizes which accessibility and verifiability categories each voting technology model makes available. The accessibility categories on the first chart link to separate charts showing more specific accessibility features for each accessibility category.

## Overview Chart:

<a href="#">Vendor</a>	Model	<a href="#">Vision [chart]</a>	<a href="#">Dexterity [chart]</a>	<a href="#">Mobility [chart]</a>	<a href="#">Hearing [chart]</a>	<a href="#">Cognitive [chart]</a>	<a href="#">All Units Accessible</a>	<a href="#">VVPR on All?</a>
<a href="#">AccuPoll</a>	<a href="#">AVS 1000</a> <sup>1</sup>	complete	partial	none	complete	complete	yes	always
<a href="#">AutoMARK (ES&amp;S)</a>	<a href="#">ballot marking device</a> <sup>2</sup>	complete	complete	none	partial	partial	yes	always
<a href="#">Avante</a>	<a href="#">Vote Trakker</a> <sup>3</sup>	partial	minimal	partial	none	minimal	yes	always
<a href="#">Avante</a>	<a href="#">Vote Trakker Full Face</a> <sup>4</sup>	partial	minimal	partial	none	minimal	yes	always
<a href="#">Diebold</a>	<a href="#">AccuVote TS</a> <sup>5</sup>	minimal	minimal	complete	complete	partial	no	optional
<a href="#">Diebold</a>	<a href="#">AccuVote TSX</a> <sup>6</sup>	partial	minimal	none	none	minimal	no	optional
<a href="#">ES&amp;S</a>	<a href="#">iVotronic</a> <sup>7</sup>	partial	minimal	complete	none	minimal	no	optional
<a href="#">ES&amp;S</a>	<a href="#">iVotronic LS</a> <sup>8</sup>	partial	minimal	none	partial	partial	no	optional

<a href="#">Vendor</a>	Model	<a href="#">Vision [chart]</a>	<a href="#">Dexterity [chart]</a>	<a href="#">Mobility [chart]</a>	<a href="#">Hearing [chart]</a>	<a href="#">Cognitive [chart]</a>	<a href="#">All Units Accessible</a>	<a href="#">VVPR on All?</a>
<a href="#">Hart Intercivic</a>	<a href="#">eSlate</a> <sup>9</sup>	partial	partial	partial	complete	complete	no	optional
<a href="#">Populex</a>	<a href="#">Digital Paper Ballot</a> <sup>10</sup>	<i>coming soon</i>	-	-	-	-	-	-
<a href="#">Sequoia</a>	<a href="#">AVC Edge</a> <sup>11</sup>	partial	minimal	partial	none	partial	no	optional

**Key to Overview Chart:**

A. "Vision" = The voting process shall be accessible to voters with visual disabilities, including partial vision, poor vision, color blindness, and blindness.<sup>12</sup>

B. "Dexterity" = The voting process shall be accessible to voters who lack fine motor control or the use of their hands. All keys and controls should be operable with one hand and not require strong grasping, pinching, or twisting of the wrist.<sup>13</sup>

C. "Mobility" = The voting process shall be accessible to voters who use mobility aids, including wheelchairs. All controls should be within reach of the voter.<sup>14</sup>

D. "Hearing" = The voting process shall be accessible to voters with hearing disabilities, providing both audio and visual cues to the voter. Also no voting station will require speech for its operation.<sup>15</sup>

E. "Cognitive" = The voting process shall be accessible to voters with cognitive disabilities. All voters should be able to negotiate the process effectively, efficiently, and comfortably.<sup>16</sup>

F. "All Units Accessible" reflects whether the accessibility features are on each unit, or whether they are optional add-ons.

G. "VVPR on All?" indicates whether the voter-verified paper record audit feature is available as part of every device, or whether it is an optional add-on.

**Footnotes for Overview Chart:**

1. <http://www.accupoll.com/TheAccuPollAdvantage/Brochures/accessibility.pdf>

2. <http://www.essvote.com/HTML/docs/AutoMark.pdf> (Note: Although some maintain that ballot-marking devices are not accessible to mobility-impaired and dexterity-impaired individuals due to the need to move the paper ballot from the device to the secure ballot box, in most areas election workers insert the ballots into the ballot box for all voters, and since it is possible to use privacy sleeves to maintain ballot secrecy for all voters, the ballot-marking devices provide as much accessibility to mobility-impaired and dexterity-impaired voters as to all other voters.)
3. <http://www.vote-trakker.com/White%20Papers/ACCESSIBLE%20VOTING%20with%20voter%20verifiable%20paper%20records%20in%20DRE%20Voting%20System.pdf> and [http://www.vote-trakker.com/accessible\\_optical\\_voting.html](http://www.vote-trakker.com/accessible_optical_voting.html)
4. <http://www.vote-trakker.com/White%20Papers/fullfaceballottouchscreensystem.pdf> and [http://www.vote-trakker.com/accessible\\_optical\\_voting.html](http://www.vote-trakker.com/accessible_optical_voting.html)
5. [http://www6.diebold.com/dieboldes/accuvote\\_ts.htm](http://www6.diebold.com/dieboldes/accuvote_ts.htm)
6. [http://www6.diebold.com/dieboldes/accuvote\\_tsx.htm](http://www6.diebold.com/dieboldes/accuvote_tsx.htm)
7. <http://www.essvote.com/HTML/docs/iVotronic.pdf>
8. [http://www.essvote.com/HTML/docs/ESS\\_iVotronic\\_LS.pdf](http://www.essvote.com/HTML/docs/ESS_iVotronic_LS.pdf)
9. [http://www.hartintercivic.com/files/accessible\\_DLA\\_12\\_rev.pdf](http://www.hartintercivic.com/files/accessible_DLA_12_rev.pdf)
10. <http://www.populex.com/dfb.htm>
11. <http://www.sequoiavote.com/docs/AVCEdge.pdf>
12. <http://www.verifiedvotingfoundation.org/downloads/v1s2.pdf> pp.16-18
13. <http://www.verifiedvotingfoundation.org/downloads/v1s2.pdf> p.25
14. <http://www.verifiedvotingfoundation.org/downloads/v1s2.pdf> p.26
15. <http://www.verifiedvotingfoundation.org/downloads/v1s2.pdf> p.30
16. <http://www.verifiedvotingfoundation.org/downloads/v1s2.pdf> pp.30,34

## Vision Chart:

<u>Vendor</u>	Model	<u>Display Font Size</u>	<u>Display Contrast</u>	<u>Display Color Shift</u>	<u>Audio Device</u>	<u>Audio Speed</u>	<u>Audio Volume</u>	<u>Voice Type</u>	<u>VVPR Readback</u>	<u>Tactile Keypad</u>	<u>Additional Features</u>	<u>All Units Accessible</u>	<u>VVPR on All?</u>
<a href="#">AccuPoll</a>	<a href="#">AVS 1000</a> <u>1</u>	yes <u>2</u>	yes <u>1</u>	yes <u>1</u>	yes <u>1</u>	yes <u>1</u>	yes <u>3</u>	human <u>3</u>	yes <u>1</u>	yes <u>1</u>	braille keypad <u>1</u>	yes	always
<a href="#">AutoMARK (ES&amp;S)</a>	<a href="#">ballot marking device</a> <u>4</u>	yes <u>4</u>	yes <u>5</u>	yes	yes <u>4</u>	yes <u>4</u>	yes <u>6</u>	synth <u>7</u>	yes <u>8</u>	yes <u>6</u>	instructions in braille repeat key <u>5</u>	yes	always
<a href="#">Avante</a>	<a href="#">Vote Trakker</a> <u>9</u>	yes <u>10</u>	no <u>11</u>	yes <u>10</u>	yes <u>12</u>	yes <u>12</u>	no <u>11</u>	synth <u>11</u>	yes <u>13</u>	yes <u>10</u>	can navigate audio ballot <u>14</u>	yes	always
<a href="#">Avante</a>	<a href="#">Vote Trakker Full Face</a> <u>15</u>	yes <u>16</u>	yes <u>15</u>	yes <u>15</u>	yes <u>15</u>	-	-	-	yes <u>15</u>	yes <u>15</u>	-	yes	always
<a href="#">Diebold</a>	<a href="#">AccuVote TS</a> <u>17</u>	yes <u>17</u>	no <u>18</u>	no <u>18</u>	optional <u>17</u>	no <u>11</u>	yes <u>19</u>	human <u>11</u>	-	no <u>20</u>	-	no	optional
<a href="#">Diebold</a>	<a href="#">AccuVote TSX</a> <u>21</u>	yes <u>21</u>	yes <u>22</u>	yes <u>22</u>	optional <u>21</u>	yes <u>23</u>	-	-	-	no <u>20</u>	-	no	optional
<a href="#">ES&amp;S</a>	<a href="#">iVotronic</a> <u>24</u>	yes <u>2</u>	no <u>11</u>	-	yes <u>24</u>	no <u>25</u>	no <u>25</u>	human <u>11</u>	-	yes <u>26</u>	braille keypad <u>26</u>	no	optional
<a href="#">ES&amp;S</a>	<a href="#">iVotronic LS</a> <u>27</u>	yes <u>27</u>	yes <u>27</u>	-	yes <u>27</u>	-	-	-	-	-	-	no	optional
<a href="#">Hart Intercivic</a>	<a href="#">eSlate</a> <u>28</u>	yes <u>2</u>	yes <u>29</u>	-	optional <u>30</u>	no <u>11</u>	yes <u>31</u>	human <u>11</u>	-	yes <u>29</u>	-	no	optional

<u>Vendor</u>	Model	<u>Display Font Size</u>	<u>Display Contrast</u>	<u>Display Color Shift</u>	<u>Audio Device</u>	<u>Audio Speed</u>	<u>Audio Volume</u>	<u>Voice Type</u>	<u>VVPR Readback</u>	<u>Tactile Keypad</u>	<u>Additional Features</u>	<u>All Units Accessible</u>	<u>VVPR on All?</u>
<u>Populex</u>	<u>Digital Paper Ballot</u> <sup>32</sup>	yes <sup>33</sup>	yes <sup>34</sup>	yes <sup>34</sup>	-	-	yes <sup>34</sup>	-	yes <sup>34</sup>	-	-	yes	optional
<u>Sequoia</u>	<u>AVC Edge</u> <sup>35</sup>	yes <sup>2</sup>	no <sup>11</sup>	-	optional <sup>36</sup>	no <sup>37</sup>	yes <sup>37</sup>	human <sup>11</sup>	-	optional <sup>36</sup>	braille keypad <sup>38</sup>	no	optional

**Key to Vision Chart:**

- A. "Display Font Size" = capability to enlarge font so that voters with limited vision can more easily read the text.
- B. "Display Contrast" = increase or change contrast so text stands out, for voters with color-blindness and/or limited vision.
- C. "Display Color Shift" varies the colors shown on the screen, for voters with color-blindness and/or limited vision.
- D. "Audio Device" refers to a feature which allows voters to hear the instructions and ballot choices read to them through headphones. Some systems use synthesized voice, while others use human voice. Only the AutoMARK offers synchronized audio/video (enables the audio interface to be synchronized to the text being displayed on the screen, an important benefit for voters with a variety of cognitive impairments). New draft NIST Voluntary Voting Systems Guidelines indicate "it is anticipated that this will become a requirement in future versions [of the VVSG]."
- E. "Audio Speed" refers to a feature which allows voters to adjust the speed at which text is read to them through headphones.
- F. "Audio Volume" refers to a feature which allows voters to adjust the volume at which text is read to them through headphones.
- G. "Voice Type" refers to recorded human speech or synthesized computer speech.
- H. "VVPR Readback" is an audio readback of the voter-verified paper record (VVPR) enabling the visually impaired voters to verify that their votes are recorded as intended and to make changes as necessary. In order to provide this feature, audio readback must be from the paper record itself and not from the voting machine's internal memory.
- I. "Tactile Keypad" refers to manual controls which may include Braille, specially raised or shaped buttons, etc., to facilitate the selection of choices as the voter goes through the ballot.

## Footnotes for Vision Chart:

1. <http://www.accupoll.com/TheAccuPollAdvantage/Brochures/accessibility.pdf>
2. [http://www.capc.umd.edu/rpts/md\\_evote\\_ContempVotingMach.pdf](http://www.capc.umd.edu/rpts/md_evote_ContempVotingMach.pdf) p.7
3. <http://www.accupoll.com/TheAccuPollAdvantage/WhitePapers/Accessible.pdf>
4. <http://www.essvote.com/HTML/docs/AutoMark.pdf> (Note: Although some maintain that ballot-marking devices are not accessible to mobility-impaired and dexterity-impaired individuals due to the need to move the paper ballot from the device to the secure ballot box, in most areas election workers insert the ballots into the ballot box for all voters, and since it is possible to use privacy sleeves to maintain ballot secrecy for all voters, the ballot-marking devices provide as much accessibility to mobility-impaired and dexterity-impaired voters as to all other voters.)
5. [http://www.solidworks.com/pages/popup/viewrelease.html?prfile=11\\_01\\_2004.html](http://www.solidworks.com/pages/popup/viewrelease.html?prfile=11_01_2004.html)
6. <http://www.automarkts.com/> under tutorial under navigation
7. <http://www.johnson-county.com/auditor/min/050502vote.htm>
8. <http://vote.nist.gov/NISTEACResaultest.pdf> under ?ensuring access to voting?
9. <http://www.vote-trakker.com/White%20Papers/ACCESSIBLE%20VOTING%20with%20voter%20verifiable%20paper%20records%20in%20DRE%20Voting%20System.pdf> and [http://www.vote-trakker.com/accessible\\_optical\\_voting.html](http://www.vote-trakker.com/accessible_optical_voting.html)
10. [http://www.uhavavote.org/vendorfair/survey\\_results/avante\\_4.5.doc](http://www.uhavavote.org/vendorfair/survey_results/avante_4.5.doc)
11. <http://www.cvfieldsmbp.org/Voting%20Technology%20for%20People%20With%20Disabilities.pdf> p.42
12. <http://www.afb.org/afbpress/pub.asp?DocID=aw050404&select=1#1> under Voting Machines: Vote-Trakker
13. <http://www.votersunite.org/info/ElectronicVotingInBrief.pdf> p. 3
14. [http://www.verifiedvoting.org/downloads/Avante\\_AccessibleVVPB.pdf](http://www.verifiedvoting.org/downloads/Avante_AccessibleVVPB.pdf) p.4
15. <http://www.vote-trakker.com/White%20Papers/fullfaceballottouchscreensystem.pdf> and

[http://www.vote-trakker.com/accessible\\_optical\\_voting.html](http://www.vote-trakker.com/accessible_optical_voting.html)

16. <http://www.vote-trakker.com/evc308sprff.html>

17. [http://www6.diebold.com/dieboldes/accuvote\\_ts.htm](http://www6.diebold.com/dieboldes/accuvote_ts.htm)

18. Email letter from Carrie Frank at Diebold Corporation, July 5, 2005 (attached chart).

19. <http://www.cs.umd.edu/~bederson/voting/umd-dre-report.pdf>

20. Diebold claims that their machines have a tactile keyboard, but in their letters they describe it as a telephone keypad with a dotted five key, which is a regular telephone keypad.

21. [http://www6.diebold.com/dieboldes/accuvote\\_tsx.htm](http://www6.diebold.com/dieboldes/accuvote_tsx.htm)

22. Email letter from Buck Jones at Diebold Corporation, July 3, 2005.

23. [http://www.tbpc.state.tx.us/cat\\_page/578-N1DieboldAccuVoteTSX.pdf](http://www.tbpc.state.tx.us/cat_page/578-N1DieboldAccuVoteTSX.pdf) p. 3

24. <http://www.essvote.com/HTML/docs/iVotronic.pdf>

25. <http://www.cvfieldsmbp.org/Voting%20Technology%20for%20People%20With%20Disabilities.pdf> p.22

26. <http://www.essvote.com/HTML/products/ivotronic.html> right side column

27. [http://www.essvote.com/HTML/docs/ESS\\_iVotronic\\_LS.pdf](http://www.essvote.com/HTML/docs/ESS_iVotronic_LS.pdf)

28. [http://www.hartintercivic.com/files/accessible\\_DLA\\_12\\_rev.pdf](http://www.hartintercivic.com/files/accessible_DLA_12_rev.pdf)

29. [http://www.uhavavote.org/vendorfair/survey\\_results/hart\\_4.5.doc](http://www.uhavavote.org/vendorfair/survey_results/hart_4.5.doc) p.1

30. <http://www.hartintercivic.com/innerpage.php?pageid=26> DAU section

31. <http://www.cvfieldsmbp.org/Voting%20Technology%20for%20People%20With%20Disabilities.pdf> p.27

32. <http://www.populex.com/dfb.htm>

33. <http://www.advocacyla.org/whatsnew.html>
34. [http://www.populex.com/DPB\\_Features.htm](http://www.populex.com/DPB_Features.htm) in Allows blind and visually impaired voting section
35. <http://www.sequoiavote.com/docs/AVCEdge.pdf>
33. [http://www.dcboee.org/pdf\\_files/AVC\\_Edge\\_Web\\_Instructions.pdf](http://www.dcboee.org/pdf_files/AVC_Edge_Web_Instructions.pdf) p.5
36. <http://www.cvfieldsmbp.org/Voting%20Technology%20for%20People%20With%20Disabilities.pdf> p.33
37. [http://www.capc.umd.edu/rpts/md\\_evote\\_ContempVotingMach.pdf](http://www.capc.umd.edu/rpts/md_evote_ContempVotingMach.pdf)

## Dexterity Chart:

<u>Vendor</u>	<u>Model</u>	<u>Touchscreen</u>	<u>Sip/ Puff</u>	<u>Joystick</u>	<u>Foot Pedal</u>	<u>Jelly Switch</u>	<u>Additional Features</u>	<u>All Units Accessible</u>	<u>VVPR on All?</u>
<a href="#">AccuPoll</a>	<a href="#">AVS 1000</a> <sup>1</sup>	yes <sup>2</sup>	yes <sup>1</sup>	-	-	yes <sup>3</sup>	-	yes	always
<a href="#">AutoMARK (ES&amp;S)</a>	<a href="#">ballot marking device</a> <sup>4</sup>	yes <sup>4</sup>	yes <sup>4</sup>	yes <sup>5</sup>	yes <sup>5</sup>	-	write-in capability <sup>6</sup> input for any stereo switch <sup>7</sup>	yes	always
<a href="#">Avante</a>	<a href="#">Vote Trakker</a> <sup>8</sup>	yes <sup>9</sup>	yes <sup>10</sup>	-	-	-	-	yes	always
<a href="#">Avante</a>	<a href="#">Vote Trakker Full Face</a> <sup>11</sup>	yes <sup>12</sup>	yes <sup>10</sup>	-	-	-	-	yes	always
<a href="#">Diebold</a>	<a href="#">AccuVote TS</a> <sup>13</sup>	yes <sup>13</sup>	no <sup>5</sup>	no <sup>5</sup>	no <sup>5</sup>	no <sup>5</sup>	-	no	optional
<a href="#">Diebold</a>	<a href="#">AccuVote TSX</a> <sup>14</sup>	yes <sup>14</sup>	planned <sup>15</sup>	no <sup>5</sup>	no <sup>5</sup>	no <sup>5</sup>	tethered telephone keypad <sup>16</sup>	no	optional
<a href="#">ES&amp;S</a>	<a href="#">iVotronic</a> <sup>17</sup>	yes <sup>2</sup>	no <sup>18</sup>	-	-	-	-	no	optional
<a href="#">ES&amp;S</a>	<a href="#">iVotronic LS</a> <sup>19</sup>	yes <sup>19</sup>	-	-	-	-	-	no	optional
<a href="#">Hart Intercivic</a>	<a href="#">eSlate</a> <sup>20</sup>	no <sup>2</sup>	optional <sup>21</sup>	-	-	optional <sup>21</sup>	optional blink device <sup>22</sup>	no	optional
<a href="#">Populex</a>	<a href="#">Digital Paper Ballot</a> <sup>23</sup>	yes <sup>24</sup>	optional <sup>24</sup>	-	-	-	-	-	-
<a href="#">Sequoia</a>	<a href="#">AVC Edge</a> <sup>25</sup>	yes <sup>2</sup>	no <sup>17</sup>	-	-	-	-	no	optional

***Key to Dexterity Chart:***

A. "Touchscreen" refers to a computer monitor screen which allows a voter to make selections by touching the screen. Example:  
<http://www.emi-marine.com/products/dps/images/touchscreen%20to%20night%20mode.jpg>



B. "Sip/Puff" refers to a straw-like accessory which enables a voter to make selections by either sucking from or blowing into the device. Example: [http://www.orin.com/access/images/sip\\_pufED.jpg](http://www.orin.com/access/images/sip_pufED.jpg)



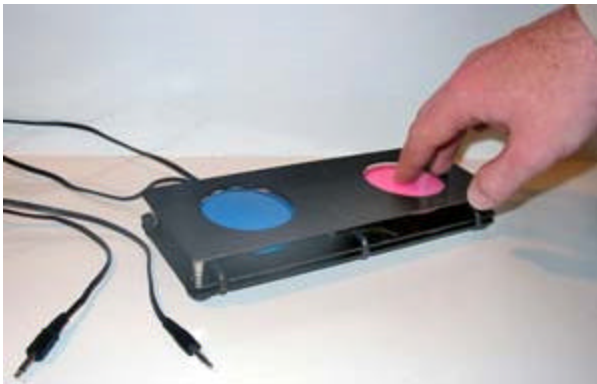
C. "Joystick" refers to a hand-controlled lever which enables a voter to make selections by pressing on it in different directions. Example: <http://www.aerotech.com/products/accessories/pics/joystick.jpg>



D. "Foot Pedal" refers to device that permits a voter to make selections using his/her foot. Example:  
<http://www.atpm.com/9.01/images/kinesis-foot-pedal.jpg>



E. "Jelly Switch" refers to a single input switch which has a large surface area and is very sensitive to the touch. Example:  
<http://www.tecsol.com.au/images/JBx2-Holder.jpg>



*Photo credit: Disability Access Switch from Technical Solutions Australia ([www.tecsol.com.au](http://www.tecsol.com.au))*

### Footnotes for Dexterity Chart:

1. <http://www.accupoll.com/TheAccuPollAdvantage/Brochures/accessibility.pdf>
2. [http://www.capc.umd.edu/rpts/md\\_evote\\_ContempVotingMach.pdf](http://www.capc.umd.edu/rpts/md_evote_ContempVotingMach.pdf) p.7
3. Confirmed by email from Frank Wiebe, AccuPoll Media Relations
4. <http://www.essvote.com/HTML/docs/AutoMark.pdf> (Note: Although some maintain that ballot-marking devices are not accessible to mobility-impaired and dexterity-impaired individuals due to the need to move the paper ballot from the device to the secure ballot box, in most areas election workers insert the ballots into the ballot box for all voters, and since it is possible to use privacy sleeves to maintain ballot secrecy for all voters, the ballot-marking devices provide as much accessibility to mobility-impaired and dexterity-impaired voters as to all other voters.)
5. [http://electionarchive.net/doc\\_other/dopp/AdviceReDiebolds.pdf](http://electionarchive.net/doc_other/dopp/AdviceReDiebolds.pdf) pp.8,9
6. <http://www.automarkts.com/> under tutorial under write-in screen
7. <http://www.automarkts.com/FAQ.htm> under "What options does Automark offer limited mobility users?"
8. <http://www.vote-trakker.com/White%20Papers/ACCESSIBLE%20VOTING%20with%20voter%20verifiable%20paper%20records%20in%20DRE%20Voting%20System.pdf> and [http://www.vote-trakker.com/accessible\\_optical\\_voting.html](http://www.vote-trakker.com/accessible_optical_voting.html)
9. <http://www.afb.org/afbpres/pub.asp?DocID=aw050404&select=1#1>
10. Email letter from Rick Gleim of Avante, August 1, 2005.
11. <http://www.vote-trakker.com/White%20Papers/fullfaceballottouchscreensystem.pdf> and [http://www.vote-trakker.com/accessible\\_optical\\_voting.html](http://www.vote-trakker.com/accessible_optical_voting.html)
12. <http://www.vote-trakker.com/evc308sprff.html>
13. [http://www6.diebold.com/dieboldes/accuvote\\_ts.htm](http://www6.diebold.com/dieboldes/accuvote_ts.htm)
14. [http://www6.diebold.com/dieboldes/accuvote\\_tsx.htm](http://www6.diebold.com/dieboldes/accuvote_tsx.htm)

15. Email letter from Carrie Frank at Diebold Corporation, July 5, 2005 (attached chart).
16. Email letter from Buck Jones at Diebold Corporation, July 3, 2005.
17. <http://www.essvote.com/HTML/docs/iVotronic.pdf>
18. <http://www.sdsos.gov/3-20-03min.htm>
19. [http://www.essvote.com/HTML/docs/ESS\\_iVotronic\\_LS.pdf](http://www.essvote.com/HTML/docs/ESS_iVotronic_LS.pdf)
20. [http://www.hartintercivic.com/files/accessible\\_DLA\\_12\\_rev.pdf](http://www.hartintercivic.com/files/accessible_DLA_12_rev.pdf)
21. <http://www.hartintercivic.com/innerpage.php?pageid=26> DAU section
22. <http://www.cvfieldsmbp.org/Voting%20Technology%20for%20People%20With%20Disabilities.pdf> p.38
23. <http://www.populex.com/dfb.htm>
24. <http://www.advocacyla.org/whatsnew.html>
25. <http://www.sequoiavote.com/docs/AVCEdge.pdf>

## Mobility Chart:

<u>Vendor</u>	Model	<u>Height Adjustment</u>	<u>Tilt Adjustment</u>	<u>Booth Size</u>	<u>Lap Voting</u>	<u>Additional Features</u>	<u>All Units Accessible</u>	<u>VVPR on All?</u>
<a href="#">AccuPoll</a>	<a href="#">AVS 1000</a> <sup>1</sup>	-	-	-	-	-	yes	always
<a href="#">AutoMARK (ES&amp;S)</a>	<a href="#">ballot marking device</a> <sup>2</sup>	-	-	-	-	-	yes	always
<a href="#">Avante</a>	<a href="#">Vote Trakker</a> <sup>3</sup>	yes <sup>4</sup>	no <sup>4</sup>	-	no <sup>4</sup>	-	yes	always
<a href="#">Avante</a>	<a href="#">Vote Trakker Full Face</a> <sup>5</sup>	yes <sup>4</sup>	no <sup>6</sup>	-	no <sup>7</sup>	-	yes	always
<a href="#">Diebold</a>	<a href="#">AccuVote TS</a> <sup>8</sup>	yes <sup>4</sup>	yes <sup>4</sup>	-	yes <sup>4</sup>	-	no	optional
<a href="#">Diebold</a>	<a href="#">AccuVote TSX</a> <sup>9</sup>	-	-	-	-	-	no	optional
<a href="#">ES&amp;S</a>	<a href="#">iVotronic</a> <sup>10</sup>	yes <sup>4</sup>	no <sup>4</sup>	-	yes <sup>4</sup>	-	no	optional
<a href="#">ES&amp;S</a>	<a href="#">iVotronic LS</a> <sup>11</sup>	-	-	-	-	-	no	optional
<a href="#">Hart Intercivic</a>	<a href="#">eSlate</a> <sup>12</sup>	yes <sup>4</sup>	no <sup>4</sup>	-	yes <sup>13</sup>	-	no	optional
<a href="#">Sequoia</a>	<a href="#">AVC Edge</a> <sup>14</sup>	yes <sup>4</sup>	yes <sup>4</sup>	28x28x60 <a href="#">15</a>	no <sup>4</sup>	-	no	optional

### Key to Mobility Chart:

- A. "Height Adjustment" = A mobility disabled voter can adjust the height of the booth.
- B. "Tilt Adjustment" = A mobility disabled voter can adjust the tilt of the screen.
- C. "Booth Size" = These measurements are the dimensions of the voting booth in inches.
- D. "Lap Voting" = Voters can place the entire machine in their laps to make the voting process easier.

## Footnotes for Mobility Chart:

1. <http://www.accupoll.com/TheAccuPollAdvantage/Brochures/accessibility.pdf>
2. <http://www.essvote.com/HTML/docs/AutoMark.pdf> (Note: Although some maintain that ballot-marking devices are not accessible to mobility-impaired and dexterity-impaired individuals due to the need to move the paper ballot from the device to the secure ballot box, in most areas election workers insert the ballots into the ballot box for all voters, and since it is possible to use privacy sleeves to maintain ballot secrecy for all voters, the ballot-marking devices provide as much accessibility to mobility-impaired and dexterity-impaired voters as to all other voters.)
3. <http://www.vote-trakker.com/White%20Papers/ACCESSIBLE%20VOTING%20with%20voter%20verifiable%20paper%20records%20in%20DRE%20Voting%20System.pdf> and [http://www.vote-trakker.com/accessible\\_optical\\_voting.html](http://www.vote-trakker.com/accessible_optical_voting.html)
4. <http://www.cvfieldsmbp.org/Voting%20Technology%20for%20People%20With%20Disabilities.pdf> p.37
5. <http://www.vote-trakker.com/White%20Papers/fullfaceballottouchscreensystem.pdf> and [http://www.vote-trakker.com/accessible\\_optical\\_voting.html](http://www.vote-trakker.com/accessible_optical_voting.html)
6. Email letter from Rick Gleim of Avante, August 1, 2005.
7. You can place the keyboard, but not the screen, in your lap. Email letter from Rick Gleim of Avante, August 1, 2005.
8. [http://www6.diebold.com/dieboldes/accuvote\\_ts.htm](http://www6.diebold.com/dieboldes/accuvote_ts.htm)
9. <http://www.essvote.com/HTML/docs/iVotronic.pdf>
10. [http://www.essvote.com/HTML/docs/ESS\\_iVotronic\\_LS.pdf](http://www.essvote.com/HTML/docs/ESS_iVotronic_LS.pdf)
11. [http://www.hartintercivic.com/files/accessible\\_DLA\\_12\\_rev.pdf](http://www.hartintercivic.com/files/accessible_DLA_12_rev.pdf)
12. [http://www.hartintercivic.com/files/accessible\\_DLA\\_12\\_rev.pdf](http://www.hartintercivic.com/files/accessible_DLA_12_rev.pdf) under "lightweight and portable"
13. <http://www.sequoiaivote.com/docs/AVCEdge.pdf>
14. <http://sequoiaivote.com/productguide.php?product=AVC%20Edge&type=Specifications>

## Hearing Chart:

<u>Vendor</u>	<u>Model</u>	<u>Written Help and Instructions</u>	<u>Synched Audio &amp; Video</u>	<u>Additional Features</u>	<u>All Units Accessible</u>	<u>VVPR on All?</u>
<a href="#">AccuPoll</a>	<a href="#">AVS 1000</a> <sup>1</sup>	yes <sup>2</sup>	yes <sup>1</sup>	-	yes	always
<a href="#">AutoMARK (ES&amp;S)</a>	<a href="#">ballot marking device</a> <sup>3</sup>	-	yes <sup>4</sup>	-	yes	always
<a href="#">Avante</a>	<a href="#">Vote Trakker</a> <sup>5</sup>	no <sup>2</sup>	no <sup>6</sup>	-	yes	always
<a href="#">Avante</a>	<a href="#">Vote Trakker Full Face</a> <sup>7</sup>	no <sup>2</sup>	-	-	yes	always
<a href="#">Diebold</a>	<a href="#">AccuVote TS</a> <sup>8</sup>	yes <sup>9</sup>	no <sup>9</sup>	-	no	optional
<a href="#">Diebold</a>	<a href="#">AccuVote TSX</a> <sup>10</sup>	-	-	-	no	optional
<a href="#">ES&amp;S</a>	<a href="#">iVotronic</a> <sup>11</sup>	no <sup>2</sup>	no <sup>6</sup>	-	no	optional
<a href="#">ES&amp;S</a>	<a href="#">iVotronic LS</a> <sup>12</sup>	yes <sup>12</sup>	-	-	no	optional
<a href="#">Hart Intercivic</a>	<a href="#">eSlate</a> <sup>13</sup>	yes <sup>2</sup>	yes <sup>6</sup>	-	no	optional
<a href="#">Sequoia</a>	<a href="#">AVC Edge</a> <sup>14</sup>	no <sup>2</sup>	no <sup>6</sup>	-	no	optional

### **Key to Hearing Chart:**

A. "Written Help and Instructions" = The computer screen displays written help and instructions to aid the voter.

B. "Synched Audio & Video" = When the voter uses the audio option, text will appear on the screen at the same time it is played through the audio.

## Footnotes for Hearing Chart:

1. <http://www.accupoll.com/TheAccuPollAdvantage/Brochures/accessibility.pdf>
2. [http://www.capc.umd.edu/rpts/md\\_evote\\_ContempVotingMach.pdf](http://www.capc.umd.edu/rpts/md_evote_ContempVotingMach.pdf) p.9
3. <http://www.essvote.com/HTML/docs/AutoMark.pdf> (Note: Although some maintain that ballot-marking devices are not accessible to mobility-impaired and dexterity-impaired individuals due to the need to move the paper ballot from the device to the secure ballot box, in most areas election workers insert the ballots into the ballot box for all voters, and since it is possible to use privacy sleeves to maintain ballot secrecy for all voters, the ballot-marking devices provide as much accessibility to mobility-impaired and dexterity-impaired voters as to all other voters.)
4. <http://vote.nist.gov/NISTEACResaultitest.pdf>
5. <http://www.vote-trakker.com/White%20Papers/ACCESSIBLE%20VOTING%20with%20voter%20verifiable%20paper%20records%20in%20DRE%20Voting%20System.pdf> and [http://www.vote-trakker.com/accessible\\_optical\\_voting.html](http://www.vote-trakker.com/accessible_optical_voting.html)
6. <http://www.cvfieldsmbp.org/Voting%20Technology%20for%20People%20With%20Disabilities.pdf> p.42
7. <http://www.vote-trakker.com/White%20Papers/fullfaceballottouchscreensystem.pdf> and [http://www.vote-trakker.com/accessible\\_optical\\_voting.html](http://www.vote-trakker.com/accessible_optical_voting.html)
8. [http://www6.diebold.com/dieboldes/accuvote\\_ts.htm](http://www6.diebold.com/dieboldes/accuvote_ts.htm)
9. <http://www.cs.umd.edu/~bederson/voting/umd-dre-report.pdf>
10. [http://www6.diebold.com/dieboldes/accuvote\\_tsx.htm](http://www6.diebold.com/dieboldes/accuvote_tsx.htm)
11. <http://www.essvote.com/HTML/docs/iVotronic.pdf>
12. [http://www.essvote.com/HTML/docs/ESS\\_iVotronic\\_LS.pdf](http://www.essvote.com/HTML/docs/ESS_iVotronic_LS.pdf)
13. [http://www.hartintercivic.com/files/accessible\\_DLA\\_12\\_rev.pdf](http://www.hartintercivic.com/files/accessible_DLA_12_rev.pdf)
14. <http://www.sequoiaivote.com/docs/AVCEdge.pdf>

## Cognitive Chart:

<u>Vendor</u>	Model	<u>Simple Directions</u>	<u>Synched Audio &amp; Video</u>	<u>Help Button</u>	<u>Language Translations</u>	<u>Additional Features</u>	<u>All Units Accessible</u>	<u>VVPR on All?</u>
<u>AccuPoll</u>	<u>AVS 1000</u> <sup>1</sup>	-	yes <sup>1</sup>	yes <sup>2</sup>	yes <sup>3</sup>	-	yes	always
<u>AutoMARK (ES&amp;S)</u>	<u>ballot marking device</u> <sup>4</sup>	yes <sup>5</sup>	yes <sup>6</sup>	-	yes <sup>7</sup>	-	yes	always
<u>Avante</u>	<u>Vote Trakker</u> <sup>8</sup>	-	no <sup>9</sup>	no <sup>2</sup>	yes <sup>8</sup>	-	yes	always
<u>Avante</u>	<u>Vote Trakker Full Face</u> <sup>10</sup>	-	no <sup>11</sup>	no <sup>2</sup>	yes <sup>10</sup>	-	yes	always
<u>Diebold</u>	<u>AccuVote TS</u> <sup>12</sup>	-	no <sup>9</sup>	no <sup>13</sup>	yes <sup>12</sup>	-	no	optional
<u>Diebold</u>	<u>AccuVote TSX</u> <sup>14</sup>	-	-	-	yes <sup>14</sup>	-	no	optional
<u>ES&amp;S</u>	<u>iVotronic</u> <sup>15</sup>	-	no <sup>9</sup>	no <sup>2</sup>	yes <sup>16</sup>	-	no	optional
<u>ES&amp;S</u>	<u>iVotronic LS</u> <sup>17</sup>	-	-	yes <sup>17</sup>	yes <sup>17</sup>	full-face ballot	no	optional
<u>Hart Intercivic</u>	<u>eSlate</u> <sup>18</sup>	-	yes <sup>9</sup>	yes <sup>2</sup>	yes <sup>19</sup>	-	no	optional
<u>Sequoia</u>	<u>AVC Edge</u> <sup>20</sup>	-	no <sup>9</sup>	yes <sup>2</sup>	yes <sup>21</sup>	-	no	optional

### ***Key to Cognitive Chart:***

- A. "Simple Directions" = Easy to read and understand instructions for operation of the voting system.
- B. "Synched Audio & Video" = When the voter uses the audio option, text will appear on the screen at the same time it is played through the audio.
- C. "Help Button" = A button on the voting machine, usually labeled help, that voters can press to call a poll worker for assistance.
- D. "Language Translations" = A language translation option for voters who speak languages other than english. Regardless of the language, candidate names shall be displayed or pronounced in English on all ballots. For written languages that do not use Roman characters, the ballot shall include transliteration of candidate names into the relevant language.

### **Footnotes for Cognitive Chart:**

1. <http://www.accupoll.com/TheAccuPollAdvantage/Brochures/accessibility.pdf>
2. [http://www.capc.umd.edu/rpts/md\\_evote\\_ContempVotingMach.pdf](http://www.capc.umd.edu/rpts/md_evote_ContempVotingMach.pdf) p.9
3. <http://www.accupoll.com/TheAccuPollAdvantage/Brochures/avs1000.pdf> p.2
4. <http://www.essvote.com/HTML/docs/AutoMark.pdf> (Note: Although some maintain that ballot-marking devices are not accessible to mobility-impaired and dexterity-impaired individuals due to the need to move the paper ballot from the device to the secure ballot box, in most areas election workers insert the ballots into the ballot box for all voters, and since it is possible to use privacy sleeves to maintain ballot secrecy for all voters, the ballot-marking devices provide as much accessibility to mobility-impaired and dexterity-impaired voters as to all other voters.)
5. <http://www.automarkts.com/> under tutorial under ?instructions?
6. <http://vote.nist.gov/NISTEACResaultest.pdf>
7. <http://www.essvote.com/HTML/products/automark.html>
8. <http://www.vote-trakker.com/White%20Papers/ACCESSIBLE%20VOTING%20with%20voter%20verifiable%20paper%20records%20in%20DRE%20Voting%20System.pdf> and [http://www.vote-trakker.com/accessible\\_optical\\_voting.html](http://www.vote-trakker.com/accessible_optical_voting.html)
9. <http://www.cvfieldsmbp.org/Voting%20Technology%20for%20People%20With%20Disabilities.pdf> p. 42

10. <http://www.vote-trakker.com/White%20Papers/fullfaceballottouchscreensystem.pdf> and [http://www.vote-trakker.com/accessible\\_optical\\_voting.html](http://www.vote-trakker.com/accessible_optical_voting.html)
11. Email letter from Rick Gleim of Avante, August 1, 2005.
12. [http://www6.diebold.com/dieboldes/accuvote\\_ts.htm](http://www6.diebold.com/dieboldes/accuvote_ts.htm)
13. <http://www.cs.umd.edu/~bederson/voting/umd-dre-report.pdf>
14. [http://www6.diebold.com/dieboldes/accuvote\\_tsx.htm](http://www6.diebold.com/dieboldes/accuvote_tsx.htm)
15. <http://www.essvote.com/HTML/docs/iVotronic.pdf>
16. [http://www.srlections.com/ivotronic/ivotronic\\_details.htm](http://www.srlections.com/ivotronic/ivotronic_details.htm)
17. [http://www.essvote.com/HTML/docs/ESS\\_iVotronic\\_LS.pdf](http://www.essvote.com/HTML/docs/ESS_iVotronic_LS.pdf)
18. [http://www.hartintercivic.com/files/accessible\\_DLA\\_12\\_rev.pdf](http://www.hartintercivic.com/files/accessible_DLA_12_rev.pdf)
19. [http://www.uhavavote.org/vendorfair/survey\\_results/hart\\_4.5.doc](http://www.uhavavote.org/vendorfair/survey_results/hart_4.5.doc) p.1
20. <http://www.sequoiaivote.com/docs/AVCEdge.pdf>
21. <http://www.acb.org/resources/votingbook1.html#ar14> Sequoia AVC Edge factsheet

Acknowledgements: Thanks to Verified Voting Foundation interns Jason Kim and Sarah Glaubman for the research required to prepare these charts.

© Copyright 2005, Verified Voting Foundation, Inc. All rights reserved, although reprint permission granted for nonprofit purposes with attribution to Verified Voting Foundation, Inc., a 501(c)(3) nonprofit corporation.